

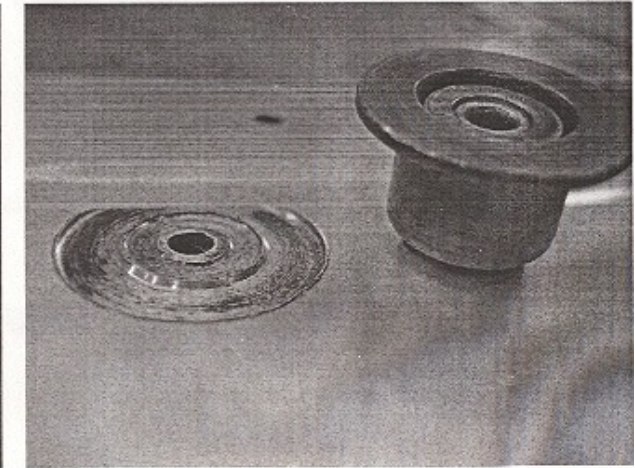
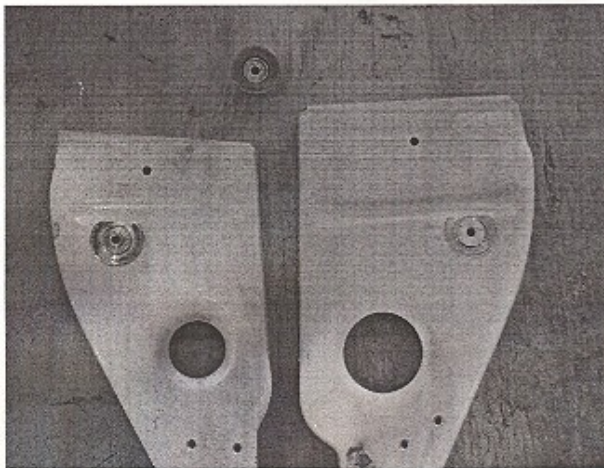
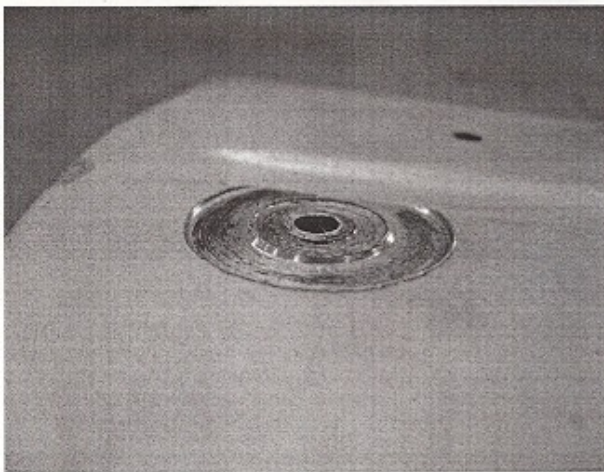
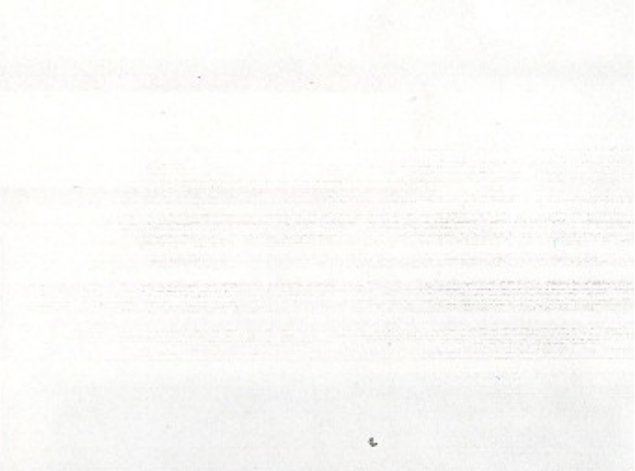
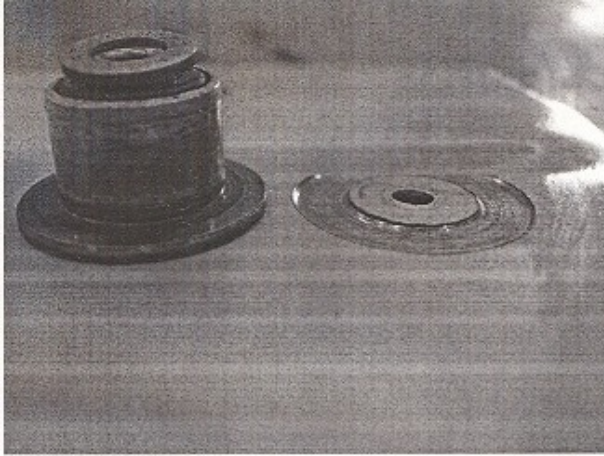
Beech C90, Flap Rib and Bearing Damage, ATA 5753

A mechanic described a flap problem on this Raytheon King Air. The left flap's aft roller bearings have very little side clearance between the bearing and the flap's rib. As the bearing wears, the side play increases to the point where the bearing flange contacts the rib.

Raytheon has not provided any chafe protection on this side of the bearing; therefore, the bearing begins to cut into the rib as it rolls fore and aft.

A small, thin Teflon washer would prevent contact and allow the bearing wear to be detected before damage occurs (RBC Bearing P/N: BC-56985).

Beech C90, Flap Rib and Bearing Damage, ATA 5753



Part Total Time: (unknown).